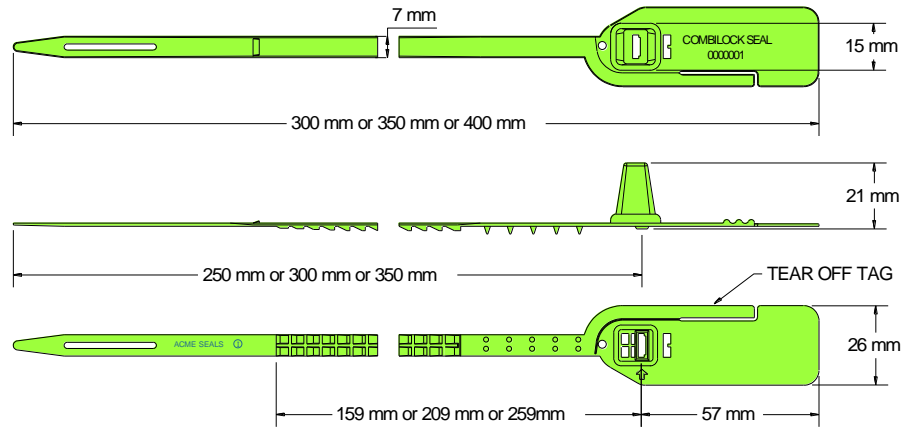




COMBILOCK SEAL Data Sheet

Acme Reg No: 0205005



The Acme **CombiLock Seal** is a versatile pull-tight seal manufactured from Polypropylene material. The design features a strong locking mechanism providing positive audible clicks and a tear off tag for easy removal, making this seal suitable for most applications.

Technical Data

Recommended Applications

Airlines, Cargo, Trailers, Containers, Rail freight, Refineries, Warehouses, Cash bags, Postbags, Lockers.

Material

Polypropylene with Biodegradable additives

Available Operating Lengths

- (L1) 25cm (overall 30cm)
- (L2) 30cm (overall 35cm)
- (L3) 35cm (overall 40cm)

Strap Width

7mm

Tag Marking Dimensions

26mm x 48mm

Average Application Breaking Strength

20kg

Marking

- Laser or Foil marking
- Consecutively numbered as standard
- Optional Customer name/logo
- Optional Laser Barcoding

Colours

- Foil marked: red, blue, green, yellow, orange, black, white.
- Laser or Foil marked: pastel shades of pink, blue, green, yellow, peach, also black and white.
- Other colours may be available on request.

Packaging

- Standard Packaging : 10 per mat and 1,000 seals/carton
- Carton Dimensions : (L1) - 61cm x 36cm x 22cm
- : (L2) - 61cm x 40cm x 23cm
- : (L3) - 61cm x 44cm x 23cm
- Carton weight : (L1) - 5.69kg/carton
- : (L2) - 6.05kg/carton
- : (L3) - 6.95kg/carton

